

bolter

1028.01 - 1028.18



collection
wallcovering
01
vinyl

description
**structure unie nervurée combinant travail
 en longueur et en largeur**

composition
**couche vinyle, impression au moyen
 d'encre à base d'eau, support en coton**

largeur
± 130 cm, ± 51 inches

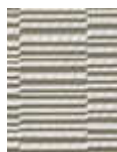
poids
± 440 gr/m², ± 18 oz/yd¹

non feu
SBI-Euroclass
B - s2 - d0



bolter

1028.01 - 1028.18



1028.16



1028.07



1028.01



1028.02



1028.03



1028.10



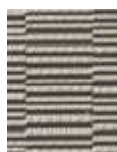
1028.11



1028.18



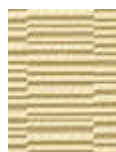
1028.15



1028.04



1028.08



1028.09



1028.05



1028.06



1028.13



1028.14



1028.12



1028.17